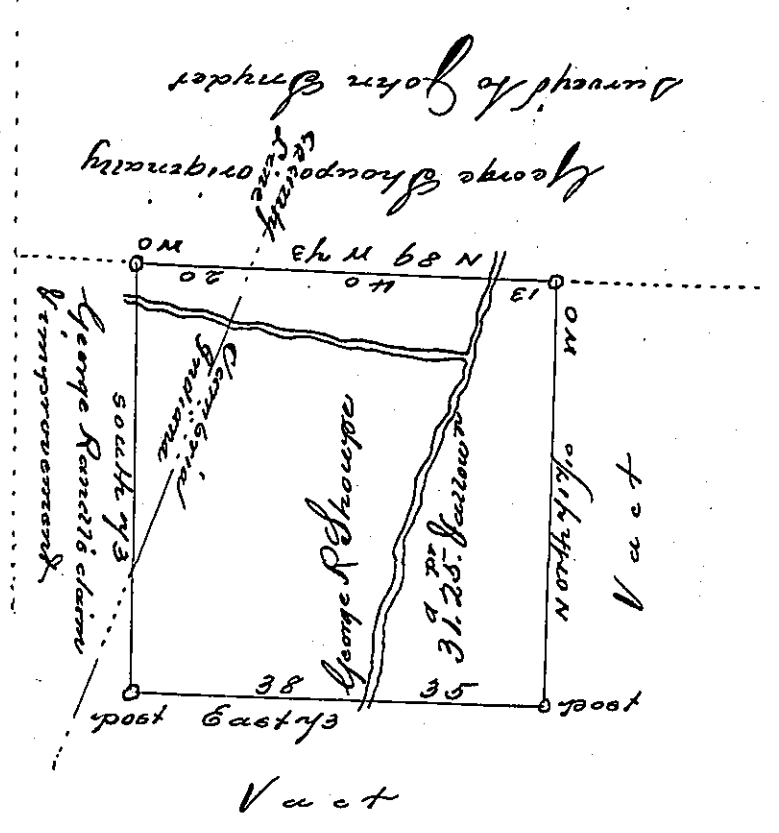


Land originally surveyed
to Daniel Randles



2nd of July 1840 surveyed to George R Shoupe the above described piece of land containing thirty one acres and twenty five perches and allowed situated on the Indiana and Cambria County line partially in Wheatfield township adjoining said Shoupe's other land and land of George Randles. By Warrant of 11th of May 1840.

Jacob Tallade Esq.
 Surveyor General of Pa.

Robt McGea D. J. of
 Indiana County
 James Moquhan D. J.
 of Cambria County

IN TESTIMONY that the above is a copy of the original remaining on file in the Department of Internal Affairs of Pennsylvania, made conformably to an Act of Assembly approved the 16th day of February, 1833, I have hereunto set my Hand and caused the Seal of said Department to be affixed at Harrisburg, this seventh day of November 1899

James Latta
 Secretary of Internal Affairs.